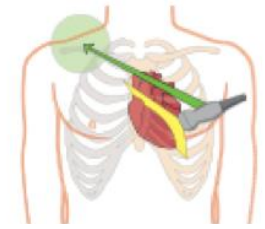


POCUS: TRANSTHORACIC CARDIAC ULTRASOUND (BASIC)

Parasternal Long Axis

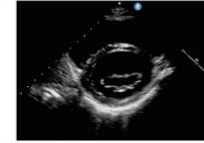
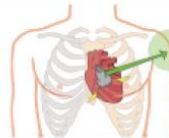
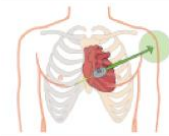


- Transducer at 4th intercostal space, left sternal border
- Indicator probe to right shoulder
- Depth 12-20cm; 20-24cm for pericardial & pleural effusions

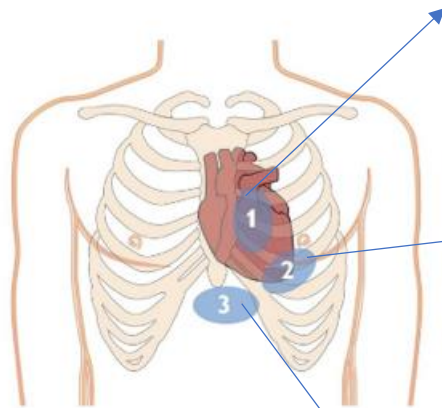


Rotate probe 90 degrees

Parasternal Short Axis

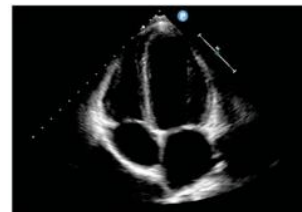
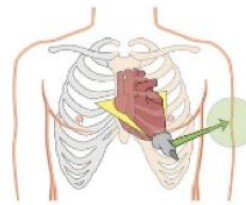


- Transducer at 4th intercostal space, left sternal border
- Indicator probe to left shoulder
- Depth 12-20cm
- Tilt transducer from head → feet to obtain each view



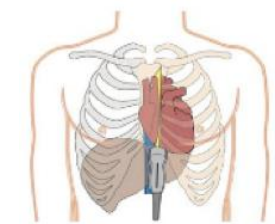
- 1 Parasternal window
- 2 Apical window
- 3 Subcostal window

Apical 4-Chamber



- Transducer at apical impulse (inferior & medial to left nipple)
- Indicator probe to left shoulder
- Depth 14-18 cm

Subcostal IVC

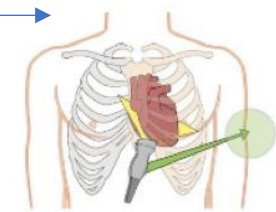


- Transducer 2-3cm below the xyphoid process,
- Indicator probe to head
- Depth 16-24 cm



Rotate probe 90 degrees

Subcostal 4-Chamber



- Transducer 2-3cm below the xyphoid process, tilt towards the left shoulder
- Indicator probe to left shoulder
- Depth 16-24 cm